



MONTHLY MEMBERSHIP PROGRESS REPORT

District 20 W

Results as of: 04/30/2019

GMT: MAHESH CHITNIS

LOCATION NEW YORK

GMT CA

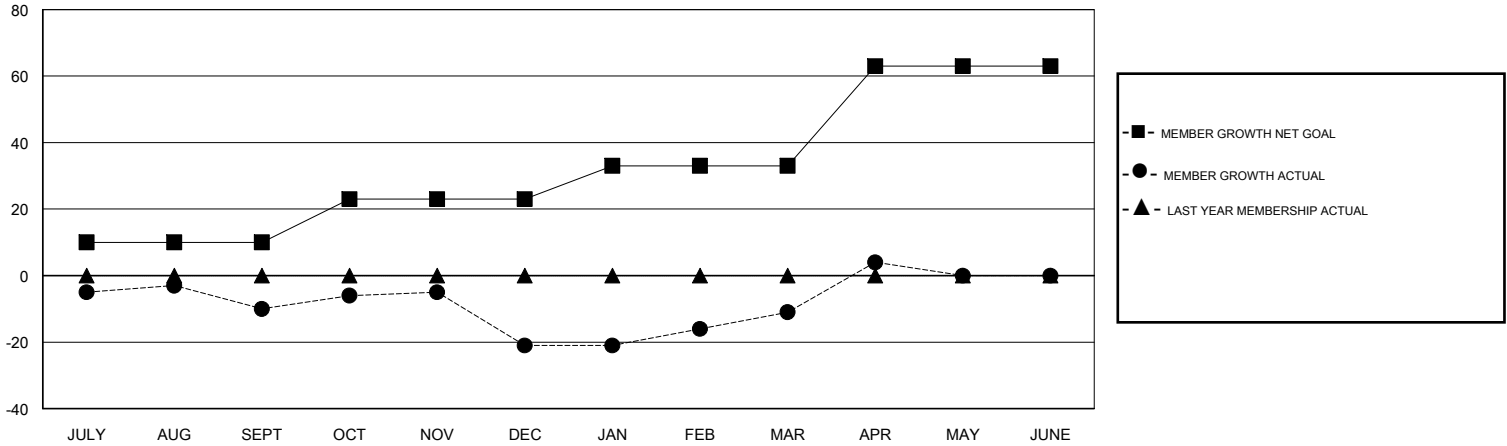
| Clubs | | | |
|-----------------------|---------------|-----------|---------------|
| RESULTS FOR 2018-2019 | | | |
| QUARTER | NEW CLUB GOAL | NEW CLUBS | DROPPED CLUBS |
| JULY/AUG/SEPT | 0 | 0 | 0 |
| OCT/NOV/DEC | 0 | 0 | 2 |
| JAN/FEB/MAR | 0 | 0 | 1 |
| APR/MAY/JUNE | 1 | 0 | 0 |

| Members | | | |
|-----------------------|------------------------|----------------------|--|
| RESULTS FOR 2018-2019 | | | |
| QUARTER | MEMBER GROWTH NET GOAL | MEMBER GROWTH ACTUAL | DROPPED MEMBERS ACTUAL (including transfers) |
| JULY/AUG/SEPT | 10 | 34 | 29 |
| OCT/NOV/DEC | 13 | 47 | 40 |
| JAN/FEB/MAR | 10 | 32 | 19 |
| APR/MAY/JUNE | 30 | 23 | 7 |

GOALS AND ACTUAL NEW CLUBS CUMULATIVE



GOALS AND ACTUAL MEMBERS CUMULATIVE



| |
|------------------|
| DROPPED CLUBS: 3 |
|------------------|

30 CLUBS OF 55 ADDED 1 OR MORE NEW MEMBERS

| GENDER DISTRIBUTION | |
|--|----------------|
| MALE | 1,009 (67.67%) |
| FEMALE | 482 (32.33%) |
| Women Percentage Fiscal Year Goal: 15% | |

| DROPPED MEMBERS | |
|-----------------|-----------|
| DECEASED | 18 |
| CLUB CANCELLED | 0 |
| OTHER | 78 |
| TOTAL | 96 |

[CLICK HERE FOR CUMULATIVE MEMBERSHIP DATA](#)

| | |
|---------------------------------|-----|
| TOTAL FAMILY UNIT MEMBERS | 321 |
| FAMILY MEMBERS PAYING HALF DUES | 164 |